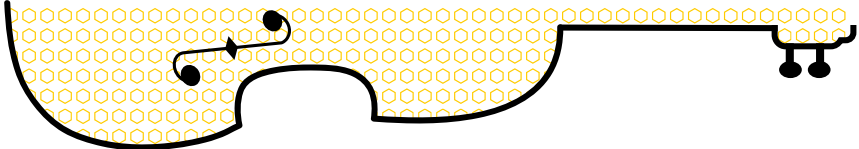
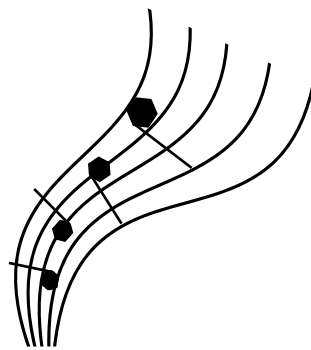


QUEEN BEE'S

# Folk Jam



# Chords for Keys

Key	I	IV	V
A	A	D	E
C	C	F	G
D	D	G	A
E	E	A	B
G	G	C	D

## Songs

Ain't No Ash Will Burn	King of the Road	You Ain't' Goin' Nowhere
Amazing Grace	Knockin' On Heaven's Door	You Are My Sunshine
American Dreaming	Let It Be	You've Got to Hide Your Love Away
Angel From Montgomery	Lonesome Pine	
The Blackest Crow	Long Black Veil	
Blister in the Sun	Look At Miss Ohio	
Blowing in the Wind	Lovin' in My Baby's Eyes	
California Dreaming	The Man Who Sold the World	
California Stars	Mary Jane's Last Dance	
Clay Pigeons	Ob-La-Di-Ob-La-Da	
Closer to Fine	On the Road Again	
Crawdad Song	One Voice	
Crooked Tree	Orphan Girl	
Dark Hollow	Pancho & Lefty	
Darlin' Honey	Paradise	
Day Tripper	Pilgrim	
Don't Think Twice It's Alright	Ready for the Times to Get Better	
Down in the Willow Garden	Red River Valley	
Elk River Blues	Redemption Song	
Empty Trainload of Sky	Ripple	
Everything is Free	Riptide	
Folsom Prison Blues	Running Down a Dream	
For What It's Worth	Salty Dog Blues	
Fortunate Son	Shady Grove	
Friend of the Devil	Sitting On Top of the World	
Girl From the North Country	Sittin' On the Dock of the Bay	
Give Me One Reason to Stay Here	Stand By Me	
Goodnight Irene	Take Me Home, Country Roads	
Hallelujah	Tennessee Waltz	
Heart of Gold	This Land is Your Land	
Helpless	Three Little Birds	
Hey Good Lookin'	Wagon Wheel	
House of the Rising Sun	Walking After Midnight	
I Shall Be Released	Walls of Time	
I Walk the Line	Wayfaring Stranger	
I Wanna Be Sedated	The Weight	
I Wish I Was the Moon Tonight	White Freightliner Blues	
I'll Fly Away	Wild World	
I'm a Believer	Wildflowers	
I'm So Lonesome I Could Cry	Wildwood Flower	
Imagine	Will the Circle Be Unbroken	
Jambalaya	Willin'	
Jolene	Wish You Were Here	
Keep On the Sunny Side	Yellow Submarine	

# Ain't No Ash Will Burn

Walt Aldridge

Waltz, key of C

Intro: F G Am Am/G  
F G C C

F G C  
I have seen snow that fell in May

C F G C

And I have seen rain on cloudless days

C F G Am Am/G

Somethings are always bound to change

F G C C

There ain't no ash will burn

Love is a precious thing I'm told

It burns just like West Virginia coal

But when the fire dies down it's cold

There ain't no ash will burn

You say this life is not your lot

Well I can't be something that I'm not

We can't stoke a fire that we ain't got

There ain't no ash will burn

In every life there comes a time

Where there are no more tears to cry

We must leave something dear behind

There ain't no ash will burn

# Amazing Grace

John Newton

6/8 time, key of C

**C C7 F C**  
Amazing grace how sweet the sound  
**C C G G7**  
That saved a wretch like me  
**C C7 F C**  
I once was lost, but now am found  
**Am G C C**  
Was blind but now I see

'Twas grace that taught my heart to fear  
And grace my fears relieved  
How precious did that grace appear  
The hour I first believed

Through many dangers, toils, and snares  
I have already come  
This grace that brought me safe thus far  
And grace will lead me home

When we've been here ten thousand years  
Bright, shining as the sun  
We've no less days to sing God's praise  
Than when we first begun

Amazing grace how sweet the sound  
That saved a wretch like me  
I once was lost, but now I'm found  
Was blind but now I see

# American Dreaming

Sierra Ferrell and Melody Walker

4/4 Key of D (original is in Eb, capo 1)

D G  
Wake up again in a old motel, is it somewhere different I can't tell

A G D  
Every set of curtains opens to the open road

D G  
And I'm missing you like hell, this van is like a prison cell

A G D  
And I know you have gone with her and I can't go back home

## CHORUS:

Bm G D  
I've been American dreaming, oo oo

Bm G D  
I'm American dreaming, oo oo

Bm G  
I'm American dreaming, ooh

A D  
But, I never seem to get no rest

D G I should get some rest today then pack my bags, be on my way  
A G D But my minds always working on the way it could have been  
D G Trying to tow a tight rope line, find a way to feel half fine  
A G D Without drowning in this wine, and calling you again

## CHORUS

*Instrumental Interlude: GG D DD G GG A D*

D G I'm losing touch with all my friends, the ones who remind me who I am  
A G D If I could just get back home to pick up where we left off  
D G I'd take better care of myself, I'd stop drinking from the bottom shelf  
A G D But my old wheels keep spinning and I cannot make them stop

## CHORUS

D G So, I get back home and try to be someone that's something like me  
A G D But, I've forgotten all my angels out here in the wind  
D G Sitting out here with my mind I meditate to pass the time  
A G Bm But there's something inside setting sail all over again

*Double Instrumental Interlude: GG D DD G GG A D (Second time with oo's)*

**DOUBLE CHORUS:**

Bm G D  
I've been American dreaming, oo oo  
Bm G D  
I'm American dreaming, oo oo  
Bm G  
I'm American dreaming, ooh  
A D  
But, I never seem to get no rest

# Angel From Montgomery

John Prine

4/4 time, key of D

INTRO: ||:D G|G |D G|G :||

D G D G  
I am an old woman named after my mother

D G |A D |D  
My old man is another child that's grown old

D G D G  
If dreams were thunder and lightning was desire

D G |A D |D  
This old house would've burnt down a long time ago

D C G D  
Make me an angel that flies from Montgomery

D C |G D |D  
Make me a poster of an old rodeo

D C G D  
Just give me one thing that I can hold on to

D G |A D |D  
To believe in this living is just a hard way to go

Post Chorus Interlude: ||:D G|G |D G|G :||

D G D G When I was a young girl I had me a cowboy  
D G A D Wasn't much to look at just a free ramblin' man  
D G D G That was a long time and no matter how I try  
D G A D The years just flow by like a broken down dam

## CHORUS

D G D G There's flies in the kitchen I can hear them buzzin'  
D G A D And I ain't done nothin' since I woke up today  
D G D G How the hell can a person go to work in the morning  
D G A D Come home in the evenin' and have nothin' to say

## CHORUS



# The Blackest Crow

Traditional

$\frac{3}{4}$  time, key of C

G F C C  
As time draws near my dearest dear  
C C Am Am  
When you and I must part  
G F C C  
How little you know of the grief and woe  
C C Am Am  
In my poor aching heart

C C C C  
Tis but I suffer for your sake  
F G Am Am  
Believe me dear it's true  
G F C C  
I wish that you were staying here  
C C Am Am  
Or I was going with you

I wish my breast were made of glass  
Wherein you might behold  
Upon my heart your name lies wrote  
In letters made of gold

**In letters made of gold, my love  
Believe me when I say  
You are the one I will adore  
Until my dying day**

The blackest crow that ever flew  
Would surely turn to white  
If ever I prove false to you  
Bright day would turn to night

**Bright day would turn to night, my love  
The elements will mourn  
If ever I prove false to you  
The seas would rage and burn**

I wish that you and me, my love  
Were on yon' shady rock  
And we had neither wealth nor care  
And riches were forgot

**I'd wish for every day a week  
And every week a year  
How happy, happy would I be  
In the presence of you, dear**

And when you're on some distant shore  
Think of your absent friends  
And when the wind blows high and clear  
A light to me pray send

**And when the wind blows high and clear  
Pray send your love to me  
That I might know by your handwrite  
How time has gone with thee**



# Blister in the Sun

*Violent Femmes*

**Intro (with Riff):**

|G C |G C |G C |G XX XX |

|G C |G C |G C |G

When I'm out walking I strut my stuff, and I'm so strung out

|G C |G C |G C |G

I'm high as a kite, I just might stop to check you out

**CHORUS:**

Em C

Let me go on like I blister in the sun

Em C D

Let me go on big hands, I know you're the one

Body and beats I stain my sheets, I don't even know why  
My girlfriend, she's at the end, she is starting to cry

**CHORUS**

When I'm out walking I strut my stuff, and I'm so strung out  
I'm high as a kite, I just might stop to check you out

When I'm out walking I strut my stuff, and I'm so strung out  
I'm high as a kite, I just might stop to check you out

Body and beats I stain my sheets, I don't even know why  
My girlfriend, she's at the end, she is starting to cry

When I'm out walking I strut my stuff, and I'm so strung out  
I'm high as a kite, I just might stop to check you out

**CHORUS**

# Blowin' in the Wind

Bob Dylan

Key of C, Capo 5, 4/4 Time

## Intro: Vamp on G

G C D G G C G G  
How many roads must a man walk down before you call him a man?  
G C D G G C D D  
How many seas must a white dove sail before she sleeps in the sand?  
G C D G G C G G  
Yes, and how many times must the cannonballs fly before they're forever banned?

## CHORUS:

C D G C  
The answer, my friend, is blowin' in the wind  
C D G G  
The answer is blowin' in the wind

*Interlude:* C D G C C D G G

G C D G G C G G  
Yes, and how many years can a mountain exist before it is washed to the sea?  
G C D G G C D D  
Yes, and how many years can some people exist before they're allowed to be free?  
G C D G G C G G  
Yes, and how many times can a man turn his head and pretend that he just doesn't see?

## CHORUS

*Interlude:* C D G C C D G G

G C D G G C G G  
Yes, and how many times must a man look up before he can see the sky?  
G C D G G C D D  
Yes, and how many ears must one man have before he can hear people cry?  
G C D G G C G G  
Yes, and how many deaths will it take till he knows that too many people have died?

## CHORUS

# California Dreamin'

The Mamas & The Papas

4/4 time, key of Dm

| Dm C | Bb C | Asus4 | A Bb |  
All the leaves are brown and the sky is gray

| F A7 | Dm Bb | Asus4 A  
I've been for a walk on a winter's day

| Dm C | Bb C | Asus4 A  
I'd be safe and warm if I was in L.A.

| Dm C | Bb C | Asus4 A  
California dreaming on such a winter's day

| Dm C | Bb C | Asus4 | A Bb |  
Stopped into a church I passed along the way

| F A7 | Dm Bb | Asus4 A  
I got down on my knees and I pretended to pray

| Dm C | Bb C | Asus4 A  
You know the preacher likes the cold he knows I'm gonna stay

| Dm C | Bb C | Asus4 A  
California dreaming on such a winter's day

## *Instrumental Verse*

| Dm C | Bb C | Asus4 | A Bb |  
All the leaves are brown and the sky is gray

| F A7 | Dm Bb | Asus4 A  
I've been for a walk on a winter's day

| Dm C | Bb C | Asus4 A  
If I didn't tell her I could leave today

| Dm C | Bb C |  
California dreaming on such a winter's

| Dm C | Bb C |  
California dreaming on such a winter's

| Dm C | Bb C | Bb Bb Dm  
California dreaming on such a winter's day

# California Stars

Wilco/Billy Bragg/Woody Guthrie

4/4 time, key of A

A A

I'd like to rest my heavy head tonight

E E

On a bed of California stars

D D

I'd like to lay my weary bones tonight

A A

On a bed of California stars

A A

I'd love to feel your hand touching mine

E E

And tell me why I must keep working on

D D

Yes I'd give my life to lay my head tonight

A A

On a bed of California stars

A A

I'd like to dream my troubles all away

E E

On a bed of California stars

D D

Jump up from my starbed, make another day

A A

Underneath my California stars

A A

They hang like grapes on vines that shine

E E

And warm the lovers' glass like friendly wine

D D

So I'd give this world just to dream a dream with you

A A

On our bed of California stars

# Clay Pigeons

Blaze Foley

4/4 time, key of C (original key F#)

**INTRO: C C F F C G C C**

C F  
I'm goin' down to the Greyhound Station, gonna get a ticket to ride

C G  
Gonna find that lady with two or three kids and sit down by her side

C F  
Ride 'til the sun comes up and down around me 'bout two or three times

C G  
Smokin' cigarettes in the last seat, try and hide my sorrow from the people I meet

C F  
And get along with it all, go down where people say "y'all"

C G  
Sing a song with a friend, change the shape that I'm in,

C F G  
And get back in the game, and start playin' again

C F  
I'd like to stay but I might have to go to start over again

C G  
Might go back down to Texas, might go to somewhere that I've never been

C F  
Get up in the mornin' and go out at night, and I won't have to go home

C G C F C G  
Get used to bein' alone, change the words to this song, start singing again

**Instrumental Interlude: C C F F C G C C**

C F  
I'm tired of runnin' round lookin' for answers to questions that I already know

C G  
I could build me a castle of memories just to have somewhere to go

C F  
Count the days and the nights that it takes to get back in the saddle again

C G  
Feed the pigeons some clay, turn the night into day

C F C G  
Start talkin' again when I know what to say

**C** **F**  
 I'm goin' down to the Greyhound Station, gonna buy a ticket to ride  
**C** **G**  
 Gonna find that lady with two or three kids and sit down by her side  
**C** **F**  
 Ride 'til the sun comes up and down around me 'bout two or three times  
**C** **G**  
 Smokin' cigarettes in the last seat, try and hide my sorrow from the people I meet  
**C** **F**  
 And get along with it all, go down where people say "y'all"  
**C** **G**  
 Feed the pigeons some clay, turn the night into day  
**C** **F** **C** **G**  
 Start talkin' again when I know what to say

**OUTRO: C C F F C G C C**

## Closer to Fine

Indigo Girls

4/4 time, key of G

G A7 C Dsus4 D Dsus2, D  
I'm trying to tell you something 'bout my life  
G A7 C Dsus4 D Dsus2, D  
Maybe give me insight between black and white  
D C  
And the best thing you ever done for me  
D C  
Is to help me take my life less seriously  
G A C Dsus4 D Dsus2, D  
It's only life after all, yeah

G A7 C Dsus4 D Dsus2, D  
Well, darkness has a hunger that's insatiable  
G A7 C Dsus4 D Dsus2, D  
And lightness has a call that's hard to hear  
D C  
And I wrap my fear around me like a blanket  
D C  
I sailed my ship of safety till I sank it  
G G  
I'm crawling on your shores

### CHORUS:

D C G  
And I went to the doctor, I went to the mountains  
D C G  
I looked to the children, I drank from the fountains  
D C  
There's more than one answer to these questions  
C G G  
Pointing me in a crooked line  
D C  
And the less I seek my source for some definitive

G A7 C Dsus4 D Dsus2, D  
Closer I am to fine, yeah Closer  
G A7 C Dsus4 D Dsus2, D  
I am to fine, yeah





## Crawdad Song

*Burl Ives*

*4/4 time, key of C*

**C**

You get a line and I'll get a pole, honey

**C**

**G7**

You get a line and I'll get a pole, babe

**C**

**C**

You get a line and I'll get a pole

**F**

**F**

And we'll go down to that crawdad hole

**C**

**G**

**C**

Honey, baby, mine

Get up old man you slept too late, honey

Get up old man you slept too late, babe

Get up old man you slept too late

Crawdad man done passed your gate

Honey, baby, mine

Yonder come a man with a sack on his back, honey

Yonder come a man with a sack on his back, babe

Yonder come a man with a sack on his back

Packin' all the crawdads he can pack

Honey, baby, mine

What you gonna do when the lake goes dry, honey

What you gonna do when the lake goes dry, babe

What you gonna do when the lake goes dry

Sit on the bank and watch the crawdads die

Honey, baby, mine

# Crooked Tree

Molly Tuttle & Melody Walker

4/4 time, key of C

**C**

Two trees in the forest, one was crooked, one was straight.

**Am**

Crimson bark and emerald needles, growing day by day.

**F**

**C**

And though they looked so different, they enjoyed the rain the same, side by side.

**C**

Chickadee had told them of a darkness on the land

**Am**

Spinning blades that came to visit, carried by a man

**F**

**C**

And every other tree would see them cut down where they stand, by and by

## **CHORUS:**

**Am**

**F**

**C**

**G**

Oh, can't you see, a crooked tree won't fit into the mill machine

**Am**

**F**

They're left to grow, wild and free

**C**

**G**

**C**

Oh, I'd rather be a crooked tree

The perfect trees were driven down the mountain to the mill

They turned them into toothpicks and twenty dollar bills

It seem the more that people took, the more they needed still, in the end

The crooked trees were left there, after all the work was done

Now they go for weeks and never witness anyone

No one left to tell them, if they're growing right or wrong, but the whispering wind

## **CHORUS**

People say I'm different, and my way of life seems strange.

I took the road less travelled, twists and turns along the way.

But like the crooked tree, I'm growing stronger day by day, as the clouds roll by.

A river never wonders, why it flows around the bend.

A mountain doesn't question, how it grows up from the land.

So, who am I to wish I wasn't just the way I am, who am I.

## **CHORUS**



# Dark Hollow

Traditional

4/4 time, key of C

          C      G      C      C  
I'd rather be in some dark hollow

          C      F      C      C  
Where the sun don't ever shine

          C          (C7)  F                  (F7)  
Than to be at home alone, knowin' that you're gone

          C          G      C      C  
Might cause me to lose my mind

## CHORUS:

          C          G      C          C  
So blow your whistle freight train

          C          F          C      C  
Carry me farther on down that track

          C      (C7)  F      (F7)  
I'm leavin' today, I'm going away

          C          G          C      C  
I'm goin', but I ain't comin' back

C G C C     I'd rather be in some dark hollow  
C F C C     Where the sun don't ever shine  
C C7 F F7    Than to be at alone in some big city  
C G C C     In a small room, with that girl on my mind

## CHORUS

C G C C     I'd rather be in some dark hollow  
C F C C     Where the sun don't ever shine  
C C7 F F7    Than to see you as another man's darlin'  
C G C C     It might cause me to lose my mind

## CHORUS



# Darlin' Honey

Joy Adams, Big Richard

4/4 Key of A

Instrumental Intro:

F#m E/G# A D E D E D E D E

F#m E

Darlin' ho-ney

A D

What can I do to see

E D

A way through the thicket, honey

E D

A way through the thorns

E D E E

A way to your arms out in the storm

F#m E I see you tryin'

A D To stand up on your feet

E D Run around the city, baby

E D Run around the town

E E Run like hell until the sun falls down

E E

## CHORUS

Bm C#m

It ain't easy, it ain't easy

Bm E

It ain't easy, my dear

F#m E I'd be lyin'

A D To say that I don't know

E D Exactly how I'm feelin', baby

E D Exactly what I need

E E It's just a list I doubt you'd wanna to see

E E

**F#m** E You been flyin'  
**A** D Sailin' through your dreams  
**E** D Live a life that suits you, baby  
**E** D Happy as can be  
**E** E It's always bright on your side of the street  
**E** E

### DOUBLE CHORUS

**Bm** **C#m**  
It ain't easy, it ain't easy  
**Bm** **E**  
It ain't easy, my dear  
**Bm** **C#m**  
It ain't easy, it ain't easy  
**Bm** **E**  
It ain't easy to make it through the years

### *Instrumental Verse*

**F#m** E I've been climbin'  
**A** D For how long, I don't know  
**E** D I can't see the summit, honey  
**E** D I don't know where I am  
**E** E The clouds rolled in the day that I began  
**E** E

**F#m** E And we've been tryin'  
**A** D To stand up on that road  
**E** D The one we found together, baby  
**E** D The one we built ourselves  
**E** E A road to run through heaven and through hell  
**E** E

### DOUBLE CHORUS

### *Instrumental Verse*

**F#m** E Darlin' honey  
**A** D What can I do to see  
**E** D A way through the thicket, honey  
**E** D A way through the thorns  
**E** E A way to your arms out in the storm

# Day Tripper

The Beatles  
4/4 time, key of E

## INTRO: E7 Riff x5

E7 Riff:

T  
A  
B

## E7

Got a good reason

## E7

For taking the easy way out

## A7

Got a good reason

## E7

For taking the easy way out now

A7 Riff:

T  
A  
B

## CHORUS:

F#

She was a day tripper

F#

One way ticket, yeah

A

G#

C#

It took me so long to find out

B

And I found out

## E7 Riff x2

She's a big teaser

She took me half the way there

She's a big teaser

She took me half the way there, now

## CHORUS

### interlude

Tried to please her

She only played one night stand

Tried to please her

She only played one night stand, now

## CHORUS (second line: Sunday driver, yeah)



# Don't Think Twice it's Alright

Bob Dylan

4/4 time, key of G

G D Em Em  
Well it ain't no use to sit and wonder why babe  
C C G D  
If'n you don't know by now

G D Em Em  
And it ain't no use to sit and wonder why babe  
A7 A7 D D7  
It'll never do some how

G G G7 G7  
When your rooster crows at the break of dawn  
C C A7 A7  
Look out your window and I'll be gone  
G D Em C  
You're the reason I'm travelin' on  
G D G G  
Don't think twice, it's all right

G D Em Em

C C G D

G D Em Em

A7 A7 D D7

G G G7 G7

C C A7 A7

G D Em C

G D G G

It ain't no use in turnin' on your light babe  
The light I never knowed  
And it ain't no use in turnin' on your light babe  
I'm on the dark side of the road

But I wish there was somethin' you would do or say  
To try and make me change my mind and stay  
We never did too much talkin' anyway  
So don't think twice it's all right

So it ain't no use in callin' out my name gal  
Like you never done before  
It ain't no use in callin' out my name gal  
I can't hear you any more

I'm a-thinkin' and a-wonderin' walkin' down the road  
I once loved a woman, a child I'm told  
I give her my heart but she wanted my soul  
Don't think twice it's all right

So long, honey babe  
Where I'm bound I can not tell  
But goodbye's too good a word babe  
So I'll just say fare thee well

I ain't sayin' you treated me unkind  
You coulda done better but I don't mind  
You just kinda wasted my precious time  
But don't think twice it's all right  
But don't think twice it's all right

# Down in the Willow Garden

Charlie Monroe

Key of G,  $\frac{3}{4}$  time

**G** **Em**  
Down in the willow garden

**G** **Em**  
My love and I did meet

**G** **Em**  
And there we sat a courting

**G** **D** **G**  
My love dropped off to sleep

**G** **Em** **G** **Em**  
I had a bottle of burgundy wine

**G** **Em**  
My young love did not know

**G** **Em**  
And there I poisoned that dear little girl

**G** **D** **G**  
Down on the banks below

**G** **Em**  
I drew my saber through her

**G** **Em**  
It was a bloody knife

**G** **Em**  
I threw her in the river

**G** **D** **G**  
It was a dreadful sight

**G** **Em** **G** **Em**  
My father often told me

**G** **Em**  
That money would set me free

**G** **Em**  
If I did murder that dear little girl

**G** **D** **G**  
Whose name was Rose Connelly

**G** **Em**  
Now he sits in his own cabin door

**G** **Em**  
A-wiping his tear-brimmed eye

**G** **Em**  
A-looking at his only dear son

**G** **D** **G**  
On yonder scaffold high

**G** **Em** **G** **Em**  
My race is run beneath the sun

**G** **Em**  
The devil is waiting for me

**G** **Em**  
For I did murder that dear little girl

**G** **D** **G**  
Whose name was Rose Connelly

# Elk River Blues

Ernie Carpenter

4/4 time, key of G

**C** **G**  
I lost my home on the beautiful Elk River  
**C** **D**  
I lost my home when they built that Elk River Dam  
**Am** **G**  
I lost my home on the beautiful Elk River  
**Am** **C** **G**  
I lost my home when they build that Elk River Dam

**C** **G**  
You dam my river you flood my lovely home  
**C** **D**  
You dam my river you flood my only home  
**Am** **G**  
I've got no other place I can go to  
**Am** **C** **G**  
And so forever will I roam

*Repeat Verse 1*

# Empty Trainload of Sky

Gillian Welch & David Rawlings

4/4 time, key of Am

**Intro:** Am C D Am  
Am D Am Am

Am C  
Saw a freight train yesterday  
D Am

It was chugging, plugging away  
Am E7

'Cross a river trestle so high  
Am C

Just a boxcar blue  
D Am  
Showing daylight clear through  
Am D Am

Just an empty trainload of sky

**Instrumental :** Am C D Am  
Am D Am Am

Am C  
Well, it hit me and it hurt me  
D Am  
Made my good humor desert me  
Am E7

For a moment I was tempted to fly  
Am C

To the Devil or the Lord  
D Am

As it hung there like a sword  
Am D Am

Just an empty trainload of sky

**Bridge:**

D C  
Was it spirit? Was it solid?  
Am

Did I ditch that class in college?  
D C

Pulled the curtain from my eye  
Am

I said hey hey, my my

**Instrumental :**

D C Am Am  
D C Am Am  
Am C D Am  
Am D Am Am

Am C  
Saw a freight train yesterday  
D Am

It was chugging, plugging away  
Am D Am

Just an empty trainload of sky  
Am D Am

Just an empty trainload of sky  
Am D | Am D | Am

Just an empty trainload of sky

# **Everything is Free**

Gillian Welch & David Rawlings

4/4 time, key of C

**Dm F C G** (repeats for whole song, two measures per chord)

**Everything is free now  
That's what they say  
Everything I ever done  
Gonna give it away**

**Someone hit the big score  
They figured it out  
That we're gonna do it anyway  
Even if it doesn't pay**

I can get a tip jar  
Gas up the car  
Try to make a little change  
Down at the bar

Or I can get a straight job  
I've done it before  
Never minded working hard  
It's who I'm working for

**But everything is free now  
That's what they say  
Everything I ever done  
Gonna give it away**

**Someone hit the big score  
They figured it out  
That we're gonna do it anyway  
Even if it doesn't pay**

Every day I wake up  
Humming a song  
But I don't need to run around  
I'll just stay at home

And sing a little love song  
My love and myself  
If there's something that you want to hear  
You can sing it yourself

**'Cause everything is free now  
That's what I said  
No one's got to listen to  
The words in my head**

**Someone hit the big score  
But I figured it out  
And I'm gonna do it anyway  
Even if doesn't pay**

# Folsom Prison Blues

Johnny Cash  
4/4 time, key of E

Play each chord written for 4 measures

E

I hear the train a comin' it's rolling 'round the bend

E

And I ain't seen the sunshine since I don't know when

A

E

I'm stuck in folsom prison, and time keeps draggin' on

B7

E

But that train keeps a rollin' on down to San Antone

E

When I was just a baby my mama told me son

E

Always be a good boy, don't ever play with guns

A

E

But I shot a man in Reno just to watch him die

B7

E

When I hear that whistle blowing, I hang my head and cry

E

I bet there's rich folk eating in a fancy dining car

E

They're probably drinkin' coffee and smoking big cigars

A

E

Well I know I had it coming, I know I can't be free

B7

E

But those people keep a movin' and that's what tortures me

E

Well if they freed me from this prison, if that railroad train was mine

E

I bet I'd move it on a little further down the line

A

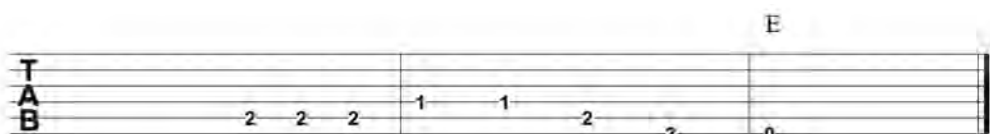
E

Far from Folsom prison, that's where I want to stay

B7

E

And I'd let that lonesome whistle blow all my blues away



# For What It's Worth

Buffalo Springfield

4/4 time, key of E

**Intro: E A E A**

**E** **A**

There's something happening here

**E** **A**

But what it is ain't exactly clear

**E** **A**

There's a man with a gun over there

**E** **A**

Telling me I got to beware

**I think it's time we**

**E** **D**

**Stop children, what's that sound?**

**A** **C**

**Everybody look, what's going down**

**E** **A** **E** **A**

There's battle lines being drawn  
Nobody's right if everybody's wrong  
Young people speaking their minds  
Getting so much resistance from behind

**It's time we**

**E** **D**

**Stop, hey, what's that sound?**

**A** **C**

**Everybody look, what's going down**

**E** **A** **E** **A**

What a field day for the heat  
A thousand people in the street  
Singing songs and they carrying signs  
Mostly say, "Hooray for our side"

**REPEAT CHORUS 2**

Paranoia strikes deep  
Into your life it will creep  
It starts when you're always afraid  
Step out of line, the men come and take you  
away

**We better**

**Stop, hey, what's that sound?**

**Everybody look, what's going down**

**Stop, hey, what's that sound?**

**Everybody look, what's going down**

**Stop, now, what's that sound?**

**Everybody look, what's going down**

# Fortunate Son

CCR

4/4 time, key of G

## INTRO: G5

**G5**                      **F5**                      **C5**                      **G5**  
Some folks are born, made to wave the flag, oh they're red, white and blue  
**G5**                      **F5**                      **C5**                      **G5**  
And when the band plays hail the chief, oh they point the cannon at you

## CHORUS:

**G5**              **D5**              **C5**                      **G5**  
It ain't me, it ain't me, I ain't no senator's son  
**G5**              **D5**              **C5**                      **G5**  
It ain't me, it ain't me, I ain't no fortunate one, no

**G5**                      **F5**                      **C5**                      **G5**  
Some folks are born silver spoon in hand, Lord don't they help themselves  
**G5**                      **F5**                      **C5**                      **G5**  
But when the taxman comes to the door, Lord the house looks like a rummage sale

## CHORUS

## INTERLUDE: G5

**G5**                      **F5**                      **C5**                      **G5**  
Some folks inherit star spangled eyes, oh they send you down to war y'all  
**G5**                      **F5**                      **C5**                      **G5**  
When you ask 'em how much should we give they only answer more, more, more

## DOUBLE CHORUS



# Friend of the Devil

Grateful Dead  
4/4 time, key of G

|G G/F# |G/E G/D |  
I lit out from Reno  
|C C/B |C/A G |

I was trailed by twenty hounds

|G G/F# |G/E G/D |  
Didn't get to sleep that night  
|C C/B |C/A G |

Till the morning came around

## CHORUS:

D D  
Set out runnin' but I take my time  
Am Am  
A friend of the Devil is a friend of mine  
D D  
If I get home before daylight  
Am Am D D D D  
I just might get some sleep tonight

Ran into the Devil, babe  
He loaned me twenty bills  
I spent the night in Utah  
In a cave up in the hills

## CHORUS

I ran down to the levee  
But the Devil caught me there  
He took my twenty dollar bill  
And he vanished in the air

## CHORUS

Bridge:

D D D D  
Got two reasons why I cry away each lonely night  
Am Am Am Am  
The first ones named sweet Anne Marie and she's my heart's delight  
D D D D  
The second one is prison, babe, the sheriff's on my trail  
Am Am Am D D D D  
And if he catches up with me, I'll spend my life in jail

Got a wife in Chino, babe  
And one in Cherokee  
First one says she's got my child  
But it don't look like me

## Chorus

Repeat Bridge

Repeat Final Verse

Chorus



# Girl From the North Country

Bob Dylan, Nashville Skyline

4/4 time, key of G

G            Bm            C            G  
If you're traveling to the north country fair  
G                            Bm    C            G  
Where the winds hit heavy on the borderline  
G            Bm    C            G  
Remember me to one who lives there  
G            Bm    C            G  
For she once was a true love of mine

See for me that her hair's hangin' down  
It curls and falls all down her breast  
See for me that her hair's hangin' down  
That's the way I remember her best

If you go when the snowflakes fall  
When the rivers freeze and summer ends  
Please see for me if she's wearing her coat so warm  
To keep her from the howling winds

If you're traveling in the north country fair  
Where the winds hit heavy on the borderline  
Please say hello to one who lives there  
'Cause she once was a true love of mine

**Repeat Verse 1**



# Goodnight Irene

*Lead Belly*

*Key of G, 3/4 Time*

## CHORUS:

G G D D

Irene, goodnight,

D D G G

Irene, goodnight

G G C C

Goodnight Irene, goodnight Irene

D D G G

I'll see you in my dreams

Last Saturday night I got married  
Me and my wife settled down  
Well now me and my wife are parted  
I'm gonna take another stroll downtown

## CHORUS

Sometimes I live in the country  
Sometimes I live in town  
Sometimes I take a great notion  
To jump in the river and drown

## CHORUS

Stop your rambling, stop your gambling  
Stop staying out late at night  
Go home to your wife and family  
And sit by the fireside bright

## CHORUS

# Hallelujah

Leonard Cohen

6/8 time

C Am C Am  
I've heard there was a secret chord that David played and it pleased the Lord  
F G C G  
But you don't really care for music, do you?  
C | F G | Am F  
It goes like this the fourth, the fifth, the minor fall, the major lift  
G Em Am Am  
The baffled king composing Hallelujah

## CHORUS:

F F Am Am  
Hallelujah Hallelujah  
F F C G C G  
Hallelujah Hallelujah

C Am C Am Your faith was strong but you needed proof, you saw her bathing on the roof  
F G C G Her beauty in the moonlight overthrew you  
C | F G | Am F She tied you to a kitchen chair, she broke your throne and she cut your hair  
G Em Am Am And from your lips she drew the Hallelujah

## CHORUS

C Am C Am You say I took the name in vain, but I don't even know the name  
F G C G But if I did, well really, what's it to you?  
C | F G | Am F There's a blaze of light in every word, it doesn't matter which you heard  
G Em Am Am The holy or the broken Hallelujah

## CHORUS

C Am C Am I did my best it wasn't much, I couldn't feel so I tried to touch  
F G C G I've told the truth, I didn't come to fool you  
C | F G | Am F And even though it all went wrong, I'll stand before the Lord of Song  
G Em Am Am With nothing on my tongue but Hallelujah

## CHORUS



# Heart of Gold

Neil Young

Key of G, 4/4 Time

*Intro: ||:Em7 |Em7 |D Em |Em :||*

Em C D G  
I wanna live, I wanna give

Em C D G  
I've been a miner for a heart of gold

Em C D G  
It's these expressions I never give

## CHORUS:

Em Em G G  
That keeps me searching for a heart of gold

C C |C G |G  
And I'm getting old.

Em Em G G  
Keep me searching for a heart of gold,

C C |C G |G  
And I'm getting old.

*Interlude: |Em7 |Em7 |D Em |Em |*

Em C D G  
I've been to Hollywood, I've been to Redwood,

Em C D G  
I'd cross the ocean for a heart of gold,

Em C D G  
I've been in my mind, it's such a fine line

## CHORUS

*Interlude: |Em7 |Em7 |D Em |Em |*

## CHORUS

# Helpless

Neil Young

4/4 time, key of D

D            A                    G            G

There is a town in north Ontario

D            A            G            G

With dream comfort memory to spare

D            A                    G            G

And in my mind I still need a place to go

D            A                    G            G

All my changes were there

D            A                    G            G

Blue blue windows behind the stars

D            A                    G            G

Yellow moon on the rise

D            A            G                    G

Big birds flying across the sky

D            A                    G            G

Throwing shadows on our eyes, leave us

## CHORUS:

D            A                    G            G

Helpless, helpless, helpless

D                    A            G            G

Baby can you hear me now

D                            A            G            G

The chains are locked, and tied across the door

D            A                    G            G

Baby sing with me somehow

*Repeat verse two*

## CHORUS:

D            A                    G            G

Helpless, helpless, helpless

X4

# Hey Good Lookin'

Hank Williams

Original Key: C

## CHORUS:

C C C C  
Say hey good lookin' whatcha got cookin'  
Dm G C G  
How's about cookin' something up with me

## Verse C:

C C C C Hey sweet baby don't you think maybe  
Dm G C C we could find us a brand new recipe

## Bridge 1:

F C F C  
I got a hot rod Ford and a two dollar bill and I know a spot right over the hill  
F C Dm G  
There's soda pop and the dancin's free so if you wanna have fun come along with me

## CHORUS

## Verse 2:

C C C C I'm free and ready so we can go steady  
Dm G C G how's about savin' all your time for me

## Verse 3:

C C C C No more lookin' I know I've been taken  
Dm G C C how's about keepin' steady company

## Bridge 2

F C F C I'm gonna throw my datebook over the fence and find me one for five or ten cents  
F C Dm G I'll keep it till it's covered with age cause I'm writin' your name down on every  
page

## CHORUS w/tag of second line



# House of The Rising Sun

6/8 Time

Original key: Am

## Verse 1:

Am C Dm F  
There is a house in New Orleans,  
Am C E E7  
They call the rising sun  
Am C Dm F  
And it's been the ruin of many a poor-boy  
Am E Am E  
And Lord, I know I'm one

## Verse 2:

Am C Dm F My mother was a tailor  
Am C E E7 Sewed my new blue jeans  
Am C Dm F My father was a gamblin' man,  
Am E Am E Down in New Orleans

## Verse 3:

Am C Dm F Now the only thing a gambler needs  
Am C E E7 Is a suitcase and a trunk  
Am C Dm F And the only time he's satisfied  
Am E Am E Is when he's all a-drunk

## Verse 4:

Am C Dm F I'm going back to New Orleans  
Am C E E My race is nearly run  
Am C Dm F I'm going to spend the rest of my days  
Am E Am In The House of The Rising Sun

# I Shall Be Released

Bob Dylan as done by The Band  
4/4 time, key of C

C C Dm Dm  
They say everything can be replaced  
Em |F G |C C  
They say every distance is not near  
C C Dm Dm  
So I remember every face  
Em |F G |C C  
Of every man who put me here

C C Dm Dm  
Now yonder stands a man in this lonely crowd  
Em |F G |C C  
A man who swears he's not to blame  
C C Dm Dm  
All day long I hear him shouting so loud  
Em |F G |C C  
Just crying out that he was framed

## CHORUS:

C C Dm Dm  
I see my light come shining  
Em |F G |C C  
From the west down to the east  
C C Dm Dm  
Any day now, any day now  
Em |F G |C C  
I shall be released

## CHORUS

C C Dm Dm  
They say every man needs protection  
Em |F G |C C  
They say that every man must fall  
C C Dm Dm  
Yet I swear I see my reflection  
Em |F G |C C  
Somewhere so high above this wall

## CHORUS

# I Walk the Line

Johnny Cash

4/4 time, key of A

E E A A  
I keep a close watch on this heart of mine  
E E A A  
I keep my eyes wide open all the time  
D D A A  
I keep the ends out for the tie that binds  
E E A A A A  
Because you're mine, I walk the line

E E A A I find it very, very easy to be true  
E E A A I find myself alone when each day is through  
D D A A Yes I'll admit that I'm a fool for you  
E E A A A A Because you're mine, I walk the line

E E A A As sure as night is dark and day is light  
E E A A I keep you on my mind both day and night  
D D A A And happiness I've known proves that it's right  
E E A A A A Because you're mine, I walk the line

E E A A You've got a way to keep me on your side  
E E A A You give me cause for love that I can't hide  
D D A A For you I know I'd even try to turn the tide  
E E A A A A Because you're mine, I walk the line

Repeat Verse 1

# I Wanna Be Sedated

Ramones

**CHORUS:**

**E5** **A5** **E5**  
Twenty, twenty, twenty-four hours to go, I wanna be sedated  
**E5** **A5** **E5**  
Nothin' to do, nowhere to go, oh, I wanna be sedated

**B5** **E5**  
Just get me to the airport, put me on a plane  
**B5** **E5**  
Hurry, hurry, hurry before I go insane  
**B5** **E5**  
I can't control my fingers, I can't control my brain  
**A5** **B5**  
Oh, no, oh-oh, oh-oh

**CHORUS**

Just put me in a wheelchair, get me on a plane  
Hurry, hurry, hurry before I go insane  
I can't control my fingers, I can't control my brain  
Oh, no, oh-oh, oh-oh

*Solo: E5 A5 B5 E5 x2 | E5*

**CHORUS (modulate up whole step for remainder of song)**

Just put me in a wheelchair, get me to the show  
Hurry, hurry, hurry, before I go loco  
I can't control my fingers, I can't control my toes  
Oh, no, oh-oh, oh-oh

**CHORUS**

Just put me in a wheelchair, get me to the show  
Hurry, hurry, hurry, before I go loco  
I can't control my fingers, I can't control my toes  
Oh, no, oh-oh, oh-oh

**Bam, bam, ba-bam, ba-bam, bam, ba-bam**  
**I wanna be sedated**  
**Bam, bam, ba-bam, ba-bam, bam, ba-bam**  
**I wanna be sedated x2**





# I'll Fly Away

A.E. Brumley

4/4 time, key of D

D

Some bright morning when this life is over

G D

I'll fly away

D

To a land on God's celestial shore

D A D

I'll fly away

**CHORUS:**

D

I'll fly away (Oh glory)

G D

I'll fly away (in the morning)

D

When I die, Hallelujah, by and by

D A D

I'll fly away

When the shadows of this life have gone

I'll fly away

Like a bird from these prison walls I'll fly

I'll fly away

Oh how glad and happy when we meet

I'll fly away

No more cold iron shackles on my feet

I'll fly away

D	D	D	D
G	G	D	D
D	D	D	D
D	A	D	D

# I'm a Believer

Neil Diamond

4/4 time, key of G

G                    D                    G                    G  
I thought love was only true in fairy tales  
G                    D                    G                    G  
Meant for someone else but not for me  
C                    G                    C                    G  
Love was out to get me, that's the way it seemed  
C                    G                    D                    D  
Disappointment haunted all of my dreams

## CHORUS:

                         |G C |G        C        |G C |  
Then I saw her face                    Now I'm a believer  
|G C |G C |G C                    |G C |  
Not a trace                    of doubt in my mind  
|G C |G C |C                    |G  
I'm in love                    I'm a believer  
                         F                    D                    D  
I couldn't leave her if I tried

G                    D                    G                    G  
I thought love was more or less a given thing  
G                    D                    G                    G  
Seems the more I gave the less I got  
C                    G                    C                    G  
What's the use in tryin'? All you get is pain  
C                    G                    D                    D  
When I needed sunshine, I got rain

## CHORUS

C                    G                    C                    G  
Love was out to get me, that's the way it seemed  
C                    G                    D                    D  
Disappointment haunted all of my dreams

## DOUBLE CHORUS

# I'm So Lonesome I Could Cry

Hank Williams

Original Key: E

$\frac{3}{4}$  time, slow waltz

Intro: E B7 E E

Verse E:

E E E E  
Hear the lonesome whippoorwill  
E E E7 E7  
He sounds too blue to fly  
A A E E  
The midnight train is whining low  
E B7 E E  
I'm so lonesome I could cry

Verse 2:

E E E E I never seen a night so long  
E E E7 E7 When times goes crawling by  
A A E E The moon just went behind a cloud  
E B7 E E To hide it's face and cry

Solo on Verse

Verse 3:

E E E E Did you ever see a robin weep  
E E E7 E7 When leaves began to die?  
A A E E Like me he's lost the will to live  
E B7 E E I'm so lonesome I could cry

Verse 4:

E E E E The silence of a falling star  
E E E7 E7 Lights up a purple sky  
A A E E And as I wonder where you are  
E B7 E E I'm so lonesome I could cry



# Imagine

John Lennon

4/4 time, key of C

|C Cmaj7 |F |

Imagine there's no heaven

|C Cmaj7 |F |

It's easy if you try

|C Cmaj7 |F |

No hell below us

|C Cmaj7 |F |

Above us, only sky

*Pre-chorus:*

|F Am |Dm Am |

Imagine all the people

G7 G7(hold)

Livin' for today

Imagine there's no countries

It isn't hard to do

Nothing to kill or die for

And no religion, too

*Pre-chorus:*

|F Am |Dm Am |

Imagine all the people

G7 G7(hold)

Livin' life in peace

**Chorus:**

|F G7 |C E7 |

You may say I'm a dreamer

|F G7 |C E7 |

But I'm not the only one

|F G7 |C E7 |

I hope someday you will join us

|F G7 |C(hold)

And the world will be as one

Imagine no possessions

I wonder if you can

No need for greed or hunger

A brotherhood of man

*Pre-chorus:*

Imagine all the people

Sharing all the world

**Chorus:**

You may say I'm a dreamer

But I'm not the only one

I hope someday you'll join us

And the world will live as one

# Jambalaya

Hank Williams

Original Key: C

4/4 Time

## Verse C:

          C          C          G  G  
Good-bye Joe he gotta go me oh my oh  
          G7          G7          C      C  
He gotta go pole the pirogue down the bayou  
          C          C          G      G  
My Yvonne the sweetest one me oh my oh  
          G7          G7          C      C  
Son of a gun we'll have big fun on the bayou

## CHORUS:

C  C  G  G Jambalaya and a crawfish pie and fillet gumbo  
G7 G7 C  C For tonight, I'm a-gonna see my my-my cher a mi-o  
C  C  G  G Pick guitar, fill fruit jar and be gay-o  
G7 G7 C  C Son of a gun, we'll have big fun on the bayou

## Verse 2:

C  C  G  G Thibodaux, Fontaineaux the place is buzzin'  
G7 G7 C  C A Kin-folk come to see Yvonne by the dozen  
C  C  G  G Dress in style the go hog wild, me oh my oh  
G7 G7 C  C Son of a gun, we'll have big fun on the bayou

## CHORUS

## Verse 3:

C  C  G  G Settle down far from town get him a pirogue  
G7 G7 C  C And he'll catch all the fish in the bayou  
C  C  G  G Swap his mon to buy Yvonne what she need-o  
G7 G7 C  C Son of a gun, we'll have big fun on the bayou

## CHORUS

# Jolene

Dolly Parton

4/4 time, key of Am

Intro: Am Am Am Am

## CHORUS:

Am C G Am Am

Jolene, Jolene, Jolene, Jolene

G G Am Am Am Am

I`m begging of you please don't take my man

Am C G Am Am

Jolene, Jolene, Jolene, Jolene

G G Am Am Am Am

Please don` t take him just because you can

Am C G Am Your beauty is beyond compare with flaming locks of auburn hair  
G G Am Am With ivory skin and eyes of emerald green  
Am C G Am Your smile is like a breath of spring, your voice is soft like summer rain  
G G Am Am And I cannot compete with you, Jolene

Am C G Am He talks about you in his sleep, there`s nothing I can do to keep  
G G Am Am From crying when he calls your name, Jolene  
Am C G Am And I can easily understand how you could easily take my man  
G G Am Am But you don't know what he means to me, Jolene

## CHORUS

Am C G Am You could have your choice of men, but I could never love again  
G G Am Am He's the only one for me, Jolene  
Am C G Am I had to have this talk with you, my happiness depends on you  
G G Am Am Whatever you decide to do, Jolene

## CHORUS

# Keep on the Sunny Side

Ada Blenkhorn

4/4 time, key of D

D G D  
There's a dark and a troubled side of life

D A  
There's a bright and a sunny side, too

A D  
Though you meet with the darkness and the strife

A D  
The sunny side you also may view

## CHORUS:

D G D  
Keep on the sunny side, always on the sunny side

D A  
Keep on the sunny side of life

D G D  
It will help us every day, it will brighten all the way

| D G | D A | D  
If we keep on the sunny side of life

Oh the storm and its fury broke today  
Crushing hopes that we cherish so dear  
Clouds and storms will in time pass away  
The sun again will shine bright and clear

## CHORUS

Let us greet with a song of hope each day  
Though the moment be cloudy or fair  
Let us trust in our savior always  
Who keeps everyone happy in his care

## CHORUS

verse:

D	G	D	D
D	D	A	A
A	A	D	D
A	A	D	D

chorus:

D	D	G	D
D	D	A	A
D	D	G	D
D G	D A	D	D

verse:

I	IV	I	I
I	I	V	V
V	V	I	I
V	V	I	I

chorus:

I	I	IV	I
I	I	V	V
I	I	IV	I
I IV	I V	I	I

# King of the Road

Roger Miller

4/4 time, key of C

C F G7 C  
Trailers for sale or rent, rooms to rent fifty cents

C F G7 G7  
No phone, no pool, no pets, I ain't got no cigarettes

C F G7 C  
Ah, but two hours of pushing broom, buys an eight by twelve four bit room

C F G7 C  
I'm a man of means by no means, king of the road!

Third boxcar, midnight train, destination Bangor, Maine  
Old worn out suit and shoes, I don't pay no union dues,  
I smoke old stogies I have found, short but not too big around,  
I'm a man of means by no means, king of the road!

## Bridge:

C F G7 C  
I know every engineer on every train, all of their children and all of their names

C F G7 G7  
And every handout in every town, and every lock that ain't locked when no one's around

**Repeat Verse 1**

# Knockin' On Heaven's Door

Bob Dylan

4/4 time, key of G

G                                    D                    Am                    Am  
Mama take this badge off of me  
G                    D            C                    C  
I can't use it anymore  
G                    D                    Am                    Am  
It's gettin' dark, too dark to see  
G                    D                    C                    C  
I feel I'm knockin' on heaven's door

## CHORUS:

G                                    D                    Am                    Am  
Knock, knock, knockin' on heaven's door  
G                                    D                    C                    C  
Knock, knock, knockin' on heaven's door  
G                                    D                    Am                    Am  
Knock, knock, knockin' on heaven's door  
G                                    D                    C                    C  
Knock, knock, knockin' on heaven's door

G                                    D                    Am                    Am  
Mama put my guns in the ground  
G                    D                    C                    C  
I can't shoot them anymore  
G                                    D                    Am                    Am  
That long black cloud is comin' down  
G                    D                    C                    C  
I feel I'm knockin' on heaven's door

## CHORUS

# Let It Be

The Beatles

4/4 time, key of G

G D Em C  
When I find myself in times of trouble, mother Mary comes to me

G D C G

Speaking words of wisdom, let it be

G D Em C  
And in my hour of darkness she is standing right in front of me

G D C G

Speaking words of wisdom, let it be

## CHORUS:

Em D C G  
Let it be, let it be, let it be, let it be

G D C G

Whisper words of wisdom, let it be

G D Em C When all the broken hearted people living in the world agree

G D C G There will be an answer, let it be

G D Em C For though they may be parted there is still a chance that they will see

G D C G There will be an answer, let it be

## CHORUS 2:

Em D C G  
Let it be, let it be, let it be, let it be

G D C G

There will be an answer let it be

G D Em C And when the night is cloudy, there is still a light that shines on me

G D C G Shine until tomorrow, let it be

G D Em C I wake up to the sound of music, mother Mary comes to me

G D C G Speaking words of wisdom, let it be

Repeat Chorus 2

# Lonesome Pine

Wayne Taylor

4/4 time, key of C

<b>C</b>	<b>G</b>				
There is a path back in the mountain					
<b>F</b>	<b>G</b>	<b>C</b>			
That one room house where I was born					
<b>Dm</b>		<b>Em</b>			
Even now, though the memory lingers					
<b>F</b>	<b>G</b>	<b>C</b>			
My mamma's smile	so soft and warm				

## CHORUS:

<b>C</b>	<b>G</b>		
Lonesome pine, I can hear you calling			
<b>F</b>	<b>G</b>	<b>C</b>	
Calling me back to my home			
	<b>Dm</b>		<b>Em</b>
Where the fox and the hound through the hills are roaming			
<b>F</b>	<b>G</b>	<b>C</b>	
Lonesome pine	calling me home		

It's been so long since I left that cabin	<b>I</b>	<b>I</b>	<b>V</b>	<b>V</b>	
In search of wealth, fortune and fame					
Late at night when I'm alone and lonely	<b>IV</b>	<b>V</b>	<b>I</b>	<b>I</b>	
I still hear daddy call my name	<b>ii</b>	<b>ii</b>	<b>iii</b>	<b>iii</b>	
<b>CHORUS</b>	<b>IV</b>	<b>V</b>	<b>I</b>	<b>I</b>	

Someday soon I'm gonna travel  
Back to the land that I love best  
In the stillness of the mountains  
I'll finally find sweet peace and rest

## CHORUS



# Long Black Veil

Dill/Wilkin

4/4 time, key of E

E E E E

Ten years ago on a cold dark night

B7 B7 A E E

There was someone killed 'neath the town hall light

E E E E

There were few at the scene but they all agreed

B7 B7 A E E

That the man who ran sure looked a lot like me

## CHORUS:

A E A E E

She walks these hills in a long black veil

A E A E E

She visits my grave when the night winds wail

E E A E

Nobody knows nobody sees

A B7 E E

Nobody knows but me

The judge said "Son, what is your alibi?

If you were somewhere else then you won't have to die."

I spoke not a word, though it meant my life

For I'd been in the arms of my best friend's wife

## CHORUS

The scaffold was high and eternity near

She stood in the crowd and shed not a tear

But sometimes at night when the cold wind moans

In a long black veil she cries over my bones

## CHORUS

# Look At Miss Ohio

Gillian Welch

4/4 time, key of G

## CHORUS:

F C G Am

Oh me oh my oh, look at Miss Ohio

F C G G

She's a-running around with her rag-top down

F C G G

She says I wanna do right but not right now

F C G Am

Gonna drive to Atlanta and live out this fantasy

F C G G

Running around with the rag-top down

F C G G

Yeah I wanna do right but not right now

## Instrumental Bridge 1:

||: Am Am D7 D7 :||

F C G Am Had your arm around her shoulder a regimental soldier

F C G G And mamma starts pushing that wedding gown

F C G G Yeah you wanna do right but not right now

## CHORUS

## Instrumental Bridge 2:

||: Am Am D7 D7 :|| F C G | Am G ||: F C G G :||

F C G Am I know all about it, so you don't have to shout it

F C G G I'm gonna straighten it out somehow

F C G G Yeah I wanna do right but not right now

**Chorus w/ last line tag**

# Lovin' in My Baby's Eyes

Taj Mahal

4/4 time, Key of G (original capo 3)

## **Intro: Instrumental Chorus**

D Am  
Look here baby, now you know I can  
C G  
Be the one to be your man  
D Am  
Baby now you know I'd do  
C G  
Anything in the world for you

## **CHORUS:**

Em G  
To have lovin' from my baby's eyes  
D G  
Oh lovin' from my baby's eyes  
Em G  
See the lovin' in my baby's eyes  
D G  
Lovin' from my baby's eyes

Look here baby now you know darn well  
Love you better than another man could tell  
Love you baby now you know i'd do  
Anything in the world for you

## **CHORUS**

Late at night when I take my rest  
Oh I hold your picture to my breast  
Love you baby now you know I'd do  
Anything in the world for you

## **CHORUS**

## **Bridge:**

C  
Love ya baby, love ya baby  
|Em D |G  
Mama now you know I do  
C  
Love ya baby, love ya baby  
A D  
Do anything for you...

## *Solo over Verse*

Late at night when I take my rest,  
Oh I hold you picture to my breast  
Love you Mama now you know I'd do  
Anything in the world for you

## **CHORUS**

# The Man Who Sold the World

David Bowie

4/4 time, key of F

**INTRO (2 bars per chord, with Tab melody)**

**A7 Dm F Dm (hold the Dm)**

**A7**  
We passed upon the stair  
**A7 Dm**  
We spoke of was and when  
**Dm A7**  
Although I wasn't there  
**A7 F**  
He said I was his friend  
**F C**  
Which came as some surprise  
**C A7**  
I spoke into his eyes  
**\* 2/4 | A7 | Dm**  
I thought you died alone  
**Dm C C**  
A long long time ago

**CHORUS 1:**

**C F**  
Oh no, not me  
**Bbm F**  
I never lost control  
**C F**  
You're face to face  
**Bbm (hold Bbm)**  
With the man who sold the world

**BREAK (2 bars per chord, with Tab melody)**

**A7 Dm F Dm (hold Dm)**

**A7**  
I laughed and shook his hand  
**A7 Dm**  
And made my way back home  
**Dm A7**  
I searched for form and land  
**A7 F**  
For years and years I roamed  
**F C**  
I gazed a gazeless stare  
**C A7**  
At all the millions here  
**\* 2/4 | A7 | Dm**  
We must have died alone  
**Dm C C**  
A long, long time ago

**CHORUS 2:**

**C F**  
Who knows? Not me  
**Bbm F**  
We never lost control  
**C F**  
You're face to face  
**Bbm (hold Bbm)**  
With the man who sold the world

**REPEAT BREAK**

**REPEAT CHORUS 2**

**REPEAT BREAK, end on Dm**

*\*Note: 2/4 measures have only 2 counts. Play two quarter note down strums.*



# Ob-La-Di-Ob-La-Da

The Beatles

Intro: A A A A

A E  
Desmond has a barrow in the marketplace  
E7 A  
Molly is the singer in a band  
A D  
Desmond says to Molly, "Girl, I like your face"  
A E A  
And Molly says this as she takes him by the hand

## CHORUS:

A |E F#m |  
Ob-la-di ob-la-da life goes on bra  
|A E |A  
La-la how their life goes on  
A |E F#m |  
Ob-la-di ob-la-da life goes on bra  
|A E |A  
La-la how their life goes on

Desmond takes a trolley to the jeweler's store  
Buys a twenty carat golden ring  
Takes it back to Molly waiting at the door  
And as he gives it to her she begins to sing

## CHORUS

### Bridge:

D  
In a couple of years they have  
D |A Asus2 |A A7 |  
Built a home sweet home  
D D  
With a couple of kids running in the yard  
A E  
Of Desmond and Molly Jones

Happy ever after in the marketplace  
Desmond lets the children lend a hand  
Molly stays at home and does her pretty face  
And in the evening she still sings it with the band

## CHORUS

### Bridge

Happy ever after in the marketplace  
Molly lets the children lend a hand  
Desmond stays at home and does his pretty face  
And in the evening she's a singer with the band

## CHORUS

E A  
And if you want some fun take ob-la-di-bla-da

# On the Road Again

Willie Nelson  
Original Key: E  
4/4 Time

## Verse 1:

          E          E  
On the road again,  
E          E          G#      G#  
    Just can't wait to get on the road again  
G#          G#          F#m      F#m  
    The life I love is makin' music with my friends  
    A                  B7          E      E  
And I can't wait to get on the road again

## Verse 2:

E  E                  On the road again  
E  E  G#  G#          Going places that I've never been  
G#  G#  F#m  F#m      Seein' things that I may never see again  
A  B7  E  E          And I can't wait to get on the road again

## CHORUS:

          A      A  
On the road again  
          A          A          E      E  
Like a band of gypsies we go down the highway  
          A          A  
We're the best of friends  
          A          A          E      E          B7      B7/  
Insisting that the world keep turnin' our way and our way

Repeat Verse 1

Guitar Solo

CHORUS

Repeat Verse 1, tag last line

# One Voice

Wailin' Jennys

Intro:

||: **F#m**                    E   A :||

**F#m**                    E   A

This is the sound of one voice

**A**            **D**   **A**

One spirit, one voice

**A**                                    **D**            **A**   **E**

The sound of one who makes a choi-ce

**F#m**                    **D**   **A**   **E**

This is the sound of one voi-ce

**F#m**                    **D**   **A**

This is the sound of one voice

This is the sound of voices two  
The sound of me singing with you  
Helping each other to make it through  
This is the sound of voices two  
This is the sound of voices two

This is the sound of voices three  
Singing together in harmony  
Surrendering to the mystery  
This is the sound of voices three  
This is the sound of voices three

This is the sound of all of us  
Singing with love and the will to trust  
Leave the rest behind, it will turn to dust  
This is the sound of all of us  
This is the sound of all of us

Bridge:

**D**    **A**        **E**

Ooh ooh ooh ooooh ooh ooh ooh

**E**        **D**    **A**        **E**

Ooh ooh ooh ooooh ooh ooh ooh

**G**        **A**            **G**        **A**

Ooh ooh ooh

This is the sound of one voice  
One people, one voice  
A song for every one of us  
This is the sound of one voice  
This is the sound of one voice



# Orphan Girl

Gillian Welch

Original key: G# (capo 1)

          G                  D  
I am an orphan on God's highway  
                  G                  C  
But I'll share my troubles if you go my way  
          G                  D  
I have no mother, no father  
          G                  C  
No sister, no brother  
G          | D      G |  
    I am an orphan girl

          G                  D  
I have had friendships pure and golden  
                  G                  C  
But the ties of kinship, I have not known them  
          G                  D  
I know no mother, no father  
          G                  C  
No sister, no brother  
G          | D      G |  
    I am an orphan girl

## *Instrumental*

G   D   But when he calls me, I will be able  
G   C   To meet my family at God's table  
G   D   I'll meet my mother, my father  
G   C   My sister, my brother  
G | D G | No more an orphan girl

G   D   Blessed savior, make me willing  
G   C   And walk beside me, until I'm with them  
G   D   Be my mother, my father  
G   C   My sister, my brother  
G | D G | No more an orphan girl

G          | D      C |   C   G   D   G  
    I am an orphan girl

# Pancho & Lefty

Townes Van Zandt

Key of D, 4/4 time

**D**

Livin' on the road, my friend

**A**

Was gonna keep you free and clean

**G**

Now you wear your skin like iron

**D**

**A**

And your breath's as hard as kerosene

**G**

Weren't your mama's only boy

**D**

**G**

But her favorite one, it seems

**Bm**

**G (D) A**

She began to cry when you said goodbye

**G**

**Bm**

And sank into your dreams

Pancho was a bandit, boys

His horse was fast as polished steel

He wore his gun outside his pants

For all the honest world to feel

Well, Pancho met his match, you know

On the deserts down in Mexico

Nobody heard his dying words

That's the way it goes

**G**

**All the federales say**

**D**

**G**

**They could have had him any day**

**Bm**

**G (D) A**

**They only let him hang around**

**G**

**Bm**

**Out of kindness, I suppose**

Lefty he can't sing the blues

All night long like he used to

The dust that Pancho bit down South

Ended up in Lefty's mouth

The day they laid poor Pancho low

Lefty split for Ohio

Where he got the bread to go

There ain't nobody knows

**All the federales say**

**They could have had him any day**

**They only let him slip away**

**Out of kindness, I suppose**

The poets tell how Pancho fell

And Lefty's livin' in a cheap hotel

The desert's quiet, and Cleveland's cold

And so the story ends, we're told

Pancho needs your prayers, it's true

But save a few for Lefty, too

He just did what he had to do

And now he's growin' old

**A few gray federales say**

**They could have had him any day**

**They only let him go so wrong**

**Out of kindness, I suppose**

**REPEAT FINAL CHORUS**

# Paradise

John Prine

*¾ time, key of D*

D D G D  
When I was a child my family would travel  
D D A D D  
Down to Western Kentucky where my parents were born  
D D G D  
And there's a backwards old town that's often remembered  
D D A D  
So many times that my memories are worn

## CHORUS:

D D G D  
And daddy, won't you take me back to Muhlenberg County  
D D A D D  
Down by the green river where paradise lay?  
D D G D D  
Well, I'm sorry my son, but you're too late in asking  
D D A D  
Mister Peabody's coal train has hauled it away

Well, sometimes we'd travel right down the Green River  
To the abandoned old prison down by Adrie Hill  
Where the air smelled like snakes and we'd shoot with our pistols  
But empty pop bottles was all we would kill

## CHORUS

Then the coal company came with the world's largest shovel  
And they tortured the timber and stripped all the land  
Well, they dug for their coal 'til the land was forsaken  
Then they wrote it all down as the progress of man

## CHORUS

When I die, let my ashes float down the Green River  
Let my soul roll on up to the Rochester dam  
I'll be halfway to Heaven with paradise waitin'  
Just five miles away from wherever I am

## CHORUS

# Pilgrim

Steve Earle

4/4 time, key of G

**G**

I am just a pilgrim on this road, boys

**C**

**G**

I am just a pilgrim on this road, boys

**C**

**G**

**(Em)**

I am just a pilgrim on this road, boys

**G**

**D**

**G**

This ain't never been my home

Sometimes the road was rocky long the way, boys x3

But I was never travelin' alone

We'll meet again on some bright highway x3

Songs to sing and tales to tell

But I am just a pilgrim on this road, boys x3

Until I see you fare thee well

Ain't no need to cry for me, boys x3

Somewhere down the road you'll understand

Cause I expect to touch his hand, boys x3

Put a word in for you if I can

# Ready for the Times to Get Better

Allen Reynolds as performed by Marty Stuart

4/4 time, key of Am

Intro:

Am

Am

I've got to tell you I've been racking my brain

G Am

Hopin' to find a way out

Am

There's been too much of this continual rain

G Am

Change is a coming no doubt

CHORUS:

C G

It's been a too long time

Dm F

With no peace of mind

Dm F Am

And I'm ready for the times to get better

Bm11/A Am Bm11/A

Am

You seem to want from me what I cannot give

G D

I get so lonesome at times

Am

I've got some dreams I've been dying to live

G Am

They're burning holes in my mind

CHORUS

*Instrumental over verse 2*

Am

G

D

Am

G

Am

*Solo over Chorus x2*

CHORUS:

C G

It's been a too long time

Dm F

With no peace of mind

Dm F Am

And I'm ready for the times to get better

C G

It's been a too long time

Dm F

With no peace of mind

Dm F (hold) Am

And I'm ready for the times to get better

Bm11/A Am Bm11/A

# Red River Valley

*Traditional*

*4/4 time, key of D*

          D          A          D          D  
From this valley they say you are leaving  
          D                  D                  A      A  
We shall miss your bright eyes and sweet smile  
          D                  D          G          G  
For you take with you all of the sunshine  
          A                  A          D          D  
That has brightened our pathway a while

## CHORUS

          D          A          D          D  
Then come sit by my side if you love me  
          D          D          A          A  
Do not hasten to bid me adieu  
          D                  D          G          G  
Just remember the Red River Valley  
          A                  A          D          D  
And the cowboy that's loved you so true

For a long time, my darlin', I've waited  
For the sweet words you never would say  
Now at last all my fond hopes have vanished  
For they say that you're going away

## CHORUS

# Redemption Song

Bob Marley

4/4 time, key of G

**G**                    **Em** | **C**    **C/B**            | **Am**  
Old pirates yes they rob I, Stole I to the merchant ship  
**G**                    **Em** | **C**    **C/B**            | **Am**  
Minutes after they took I, from the bottomless pit  
**G**                    **Em**        | **C**        **C/B**        | **Am**  
But my hand was made strong, by the hand of the almighty  
**G**                    **Em**        **C**            **D**  
We forward in this generation, triumphantly

## CHORUS:

**D**                    **G**    | **C**    **D** | **G**  
Won't you help to sing, these songs of freedom  
                  | **C**    **D** | **Em** | **C**    **D** | **G**  
'Cause all I ever had, redemption songs  
| **C**    **D** | **G**    | **C**    **D** |  
Redemption songs

**G Em C C/B Am**    Emancipate yourselves from mental slavery, none but ourselves can free our  
minds  
**G Em C C/B Am**    Have no fear for atomic energy, 'cause none of dem a can stop the time  
**G Em C C/B Am**    How long shall they kill our profits, while we stand aside and look  
**G Em C D**            Yes, some say it's just a part of it, we've got to fulfill the book

## CHORUS

INTERLUDE: ||: **Em**            | **C**    **D**            | **Em**            | **C**    **D**            :||

Repeat Verse 2

## CHORUS

Use 'Rest on 3' strum pattern for measures with one chord  
Use 'Down, Up, Down' strum pattern for measures  
with two chords



# Ripple

*The Grateful Dead*

Key: G Time: 4/4

                  G                                  C  
If my words did glow with the gold of sunshine  
          C  G  
And my tunes were played on the harp unstrung  
                  G                                  C  
Would you hear my voice  come thru the music  
G                          D  C                          G  
Would you hold it near as it were your own?

It's a hand-me-down, the thoughts are broken  
Perhaps they're better left unsung  
I don't know, don't really care  
Let there be songs to fill the air

## CHORUS:

Am          D  
Ripple in still water  
                  G                  C                  A7          D  
When there is no pebble tossed nor wind to blow

Reach out your hand if your cup be empty  
If your cup is full may it be again  
Let it be known there is a fountain  
That was not made by the hands of men

There is a road, no simple highway  
Between the dawn and the dark of night  
And if you go no one may follow  
That path is for your steps alone

## CHORUS

You who choose to lead must follow  
But if you fall you fall alone  
If you should stand then who's to guide you?  
If I knew the way I would take you home

La dee da da da, la da da da da,  
Da da da, da da, da da da da da  
La da da da, la da da, da da,  
La da da da, la da, da da.





# Riptide

Vance Joy

4/4 time, key of C

INTRO:               ||:Am           G           C           C           :||

## VERSE 1:

Am           G           C           C

I was scared of dentists and the dark

Am           G           C           C

I was scared of pretty girls and starting conversations

Am           G           C           C

Oh all my friends are turning green

Am           G           C           C

You're the magician's assistant in their dreams

## Pre-Chorus:

Am           G           C           C

Ooh, ooh ooh

Am           G           C           C

Ooh, and they come unstuck

## CHORUS:

Am           G           C           C

Lady, running down to the riptide, taken away to

Am           G           C           C

The dark side, I wanna be your left hand man

Am           G           C           C

I love you when you're singing that song and, I got a lump in my

Am           G           C           C

Throat 'cause you're gonna sing the words wrong

**VERSE 2:**

**Am**            **G**            **C**            **C**  
There's this movie that I think you'll like  
**Am**            **G**            **C**            **C**  
This guy decides to quit his job and heads to New York City  
**Am**            **G**            **C**            **C**  
This cowboy's running from himself  
**Am**            **G**            **C**            **C**  
And she's been living on the highest shelf

**PRE-CHORUS**

**CHORUS**

**BRIDGE:**

**Am**            **Am**            **G**            **G**  
I just wanna, I just wanna know  
**C**            **C**            **F**            **F**  
If you're gonna, if you're gonna stay  
**Am**            **Am**            **G**            **G**  
I just gotta, I just gotta know  
**C**            **C**            **F**            **F**  
I can't have it, I can't have it any other way

**VERSE 3** (*one strum per chord*):

**Am**            **G**            **C**            **C**  
I swear she's destined for the screen  
**Am**            **G**            **C**            **C**  
Closest thing to Michelle Pfeiffer that you've ever seen

**PRE-CHORUS**

**DOUBLE CHORUS**

# Running Down a Dream

Tom Petty

4/4 time, key of E

E E E E  
It was a beautiful day, the sun beat down  
D D E E (riff)  
I had the radio on, I was drivin'  
E E E E  
Trees flew by, me and Del was singing  
D D E E (riff)  
Little Runaway, I was flying

## CHORUS:

| A G | E |  
Yea I'm running down a dream  
| E G | A |  
That never would come to me  
| A G | E |  
Workin' on a mystery  
| E G | A |  
Goin' wherever it leads  
| A G | E |  
Running down a dream

E E E E  
I felt so good, like anything was possible  
D D E E (riff)  
I hit cruise control, and rubbed my eyes  
E E E E  
The last three days, the rain was unstoppable  
D D E E (riff)  
It was always cold, no sunshine

## CHORUS

## BRIDGE:

C C D D E E E E  
Oo-oo...

E E E E  
I rolled on, as the sky grew dark  
D D E E (riff)  
I put the pedal down to make some time  
E E E E  
There's something good, waitin' down this road  
D D E E (riff)  
I'm pickin' up whatever's mine

## DOUBLE CHORUS

## RIFF:

Low E|--0--7--0--6--0--5--0--3--0----

# Salty Dog Blues

Traditional arr. Flatt and Scruggs

Key: G Time: 4/4

G E7

Standin' on the corner with the low down blues

A7 A7

Great big hole in the bottom of my shoes

D7 D7 G G

Honey let me be your Salty Dog

## CHORUS:

G E7

Let me be your Salty Dog

A7 A7

Or I won't be your man at all

D7 D7 G G

Honey let me be your Salty Dog

Listen here Sal, well I know you

Run down stocking and a worn out shoe

Honey let me be your Salty Dog

## CHORUS

Down in the wildwood sitting on a log

Finger on the trigger and eye on the hog

Honey let me be your Salty Dog

## CHORUS

Pulled the trigger and the gun said go

The shot fell over in Mexico

Honey let me be your Salty Dog

## CHORUS

# Shady Grove

Traditional

4/4 time, key of Am

Am	G	Am	G	Am	Am	
Peaches in the summertime						
Am		C	G	Am G	Am	
Apples in the fall						
C	G	i	VII	i	i	
If I can't get the one I love						
Am	G	Am				
I don't want none at all						

## CHORUS:

Shady Grove, my little love  
Shady Grove, I know  
Shady Grove, my little love  
I'm bound for Shady Grove

Wish I had a banjo string  
Made with golden twine  
Every time I'd play on it  
I wish that girl was mine

## CHORUS

I wish I had a needle and thread  
The finest I could sew  
Sew that pretty girl to my side  
And down the road I'd go

## CHORUS

Some come here to fiddle and dance  
Some come here to tarry  
Some come here to fiddle and dance  
I come here to marry

## CHORUS



# Sitting On Top of the World

Traditional

4/4 time, key of G

          G                  G7  
It was in the spring one sunny day  
          C                          G  
My good girl left me, Lord she went away

verse:

| G | G | G7 | G7 |  
| C | C | G | G |

**CHORUS:**

          G                  Em  
And now she's gone, but I don't worry  
          G          D          G  
'Cause I'm sitting on top of the world

chorus:

| G | G | D | D |  
| G | D | G | G |

She called me up from down in El Paso  
Said come back daddy, Lord I need you so

verse:

| I | I | I7 | I7 |  
| IV | IV | I | I |

Ashes to ashes, dust to dust  
Show me a woman a man can trust

chorus:

| I | I | V | V |  
| I | V | I | I |

Mississippi River, long, deep and wide  
The woman I'm loving is on the other side

You don't like my peaches, don't shake my tree  
Get out of my orchard, let my peaches be

Don't you come here running, holding out your hand  
I'll get me a woman like you got your man





# Stand By Me

Ben E. King

4/4 time, key of C

C C Am Am

When the night has come and the land is dark

F G7 C C

And the moon is the only light we'll see

C C Am Am

Oh I won't be afraid, no I won't be afraid

F G7 C C

Just as long as you stand, stand by me *So darling, darling*

## CHORUS:

C C Am Am

Stand by me, stand by me

F G7 C C

Won't you stand, stand by me, stand by me

C C Am Am

If the sky, that we look upon, should tumble and fall

F G7 C C

And the mountains should crumble to the sea

C C Am Am

I won't cry, I won't cry, no I won't shed a tear

F G7 C C

Just as long as you stand, stand by me *So darling, darling*

## CHORUS

# Take Me Home, Country Roads

John Denver

4/4 time, key of G

G            G    Em                    Em  
Almost heaven, West Virginia  
D            D            C                    G  
Blue Ridge Mountains, Shenandoah River  
G    G            Em                    Em  
Life is old here, older than the trees  
D                    D            C                    G  
Younger than the mountains, blowin' through the breeze

## CHORUS:

          G    G            D    D  
Country roads, take me home  
          Em Em            C    C  
To the place where I belong  
          G    G            D    D  
West Virginia, mountain mama  
          C    C            G    G  
Take me home, country roads

G G Em Em All my memories gather 'round her  
D D C G Miner's lady, stranger to blue water  
G G Em Em Dark and dusty, painted on the sky  
D D C G Misty taste of moonshine, teardrop in my eye

## CHORUS

### BRIDGE:

Em    D            G                    G  
I hear a voice in the morning hour she calls me  
          C            G                    D7            D7  
The radio reminds me of my home so far away  
          Em                    F            C                    G  
And drivin' down the road I get a feeling I should  
have been home  
          D    D            D7    D7  
Yesterday, yesterday

## CHORUS



# Tennessee Waltz

*Pee Wee King*

Key of G,  $\frac{3}{4}$  Time

**G** **C**  
I was dancin' with my darlin' to the Tennessee Waltz  
**G** **D**  
When an old friend I happened to see  
**G** **C**  
I introduced her to my loved one and while they were dancin'  
**G** **D** **G**  
My friend stole my sweetheart from me

**G** **B7** **C** **G**  
I remember the night and the Tennessee Waltz  
**G** **Em** **Am7** **D7**  
Now I know just how much I have lost  
**G** **C**  
Yes, I lost my little darlin' the night they were playing  
**G** **D7** **G**  
The beautiful Tennessee Waltz

# This Land is Your Land

Woody Guthrie

4/4 time, key of D

## CHORUS:

                  G  D  
This land is your land, this land is my land  
                  A  D  
From California to the New York island  
                                  G  D  
From the redwood forest to the gulf stream waters  
A  D  
This land is made for you and me

As I was walking a ribbon of highway  
I saw above me an endless skyway  
I saw below me that golden valley  
This land was made for you and me

I've roamed and rambled and I've followed my footsteps  
To the sparkling sands of her diamond deserts  
And all around me a voice was sounding  
This land was made for you and me

There was a big high wall there that tried to stop me  
The sign was painted, said Private Property  
But on the backside it didn't say nothin'  
This land was made for you and me

When the sun comes shining then I was strolling  
The wheat fields waving and the dust clouds rolling  
A voice came chanting as the fog was lifting  
This land was made for you and me

# Three Little Birds

Bob Marley

## CHORUS:

          C   C          C   C  
Don't worry about a thing  
          F                  F                  C   C  
'Cause every little thing is gonna be alright  
                  C   C          C   C  
Singin' don't worry about a thing  
          F                  F                  C   C  
'Cause every little thing is gonna be alright

          C   C                  G   G  
Rise up this morning smile with the rising sun  
          C   C                  F   F  
Three little birds perched by my doorstep  
          C          C                  G          G  
Singin' sweet songs of melodies pure and true  
          F          F          C          C  
Sayin' this is my message to you-oo-oo

## CHORUS

# Wagon Wheel

Old Crow Medicine Show, Bob Dylan

4/4 time, key of C

**C** **G7** **Am** **F**  
Headed down south to the land of the pines, I'm thumbing my way into North Caroline

**C** **G7** **F** **F**  
Lookin' down the road, I pray to God I see headlights

**C** **G7** **Am** **F**  
I made down the coast in seventeen hours, pickin' a bouquet of dogwood flowers

**C** **G7** **F** **F**  
And I'm hopin' to Raleigh, I can see my baby tonight

## CHORUS:

**C** **G7** **Am** **F**  
Rock me mama like a wagon wheel, rock me mama any way you feel

**C** **G7** **F** **F**  
Hey-ay, mama rock me

**C** **G7** **Am** **F**  
Rock me mama like the wind and the rain, rock me mama like a Southbound train

**C** **G7** **F** **F**  
Hey-ay, mama rock me

**C** **G7** **Am** **F**  
Runnin' from the cold up in New England, I was born to be a fiddler in an old-time string band

**C** **G7** **F** **F**  
My baby plays the guitar, I pick the banjo now

**C** **G7** **Am** **F**  
The north country winters keep a-gettin' me down, I lost my money playin' poker so I had to up and leave

**C** **G7** **F** **F**  
But I ain't lookin' back to livin' that old life no more

## CHORUS

**C** **G7** **Am** **F**  
Walkin' to the south out of Roanoke, I caught a trucker out of Philly, we had a nice long toke

**C** **G7** **F** **F**  
He's headed west from the Cumberland Gap, Johnson City, Tennessee

**C** **G7** **Am** **F**  
I gotta get a move on before the sun, I hear my baby callin' my name and I know that she's the only one

**C** **G7** **F** **F**  
And if I die in Raleigh, at least I will die free

## CHORUS



# Walking After Midnight

Patsy Cline

Original Key: C

4/4 time, slow-midtempo country swing

## Verse 1:

          C                  C  
I go out walking after midnight  
          F                  F  
Out in the moonlight just like we used to do  
          C                  (F          G)                  C    C  
I'm always walking after midnight searching for you

## Verse 2:

C    C          I walk for miles along the highway  
F    F          Well that's just my way of saying I love you  
C (F G) C C    I'm always walking after midnight searching for you

## Bridge:

          F                          F7  
I stopped to see a weeping willow, crying on his pillow  
    C                          C7  
Maybe he's crying for me  
          F                          F7  
And as the skies turn gloomy, night blooms will whisper to me  
    C                          G  
I'm lonesome as I can be

## Verse 3:

C    C          I go out walking after midnight  
F    F          Out in the starlight just hoping maybe  
C (F G) C C    You're somewhere walking after midnight searching for me

## Solo over 1 verse

## Bridge

## Verse 4:

C    C          I go out walking after midnight  
F    F          Out in the moonlight just hoping maybe  
C (F G) C C    You're somewhere walking after midnight searching for me

# Walls of Time

Bill Monroe

4/4 time, key of A

A

The wind is blowing 'cross the mountains

A

D

C

And on the valley way below

A

It sweeps the grave of my darling

D

E

A

When I die that's where I want to go

## **CHORUS:**

**Lord send the angels for my darling**

**And take her to that home on high**

**I'll wait my time out here on earth love**

**And come to you when I die**

Our names are carved upon the tombstone

I promised you before you died

Our love will bloom forever darling

When we rest side by side

I hear a voice out in the darkness

It moans and whispers through the pines

I know it's my sweetheart a calling

I hear her through the walls of time



# Wayfaring Stranger

Traditional

Key: Am Time 4/4

**Am**

I am a poor wayfaring stranger

**Dm Am**

Traveling through this world of woe

**Am**

There is no sickness, toil nor danger

**Dm E7 Am**

In that bright land to which I go

## **CHORUS:**

**F C**

**I'm going there to see my father**

**F E7**

**I'm going there no more to roam**

**Am**

**I'm only going over Jordan**

**Dm E7 Am**

**I'm only going over home**

I know dark clouds will gather o'er me

I know my way is rough and steep

Yet beauteous fields lie just before me

And God's redeemed their vigils keep

**I'm going there to see my mother**

**She said she'd meet me when I come**

**I'm only going over Jordan**

**I'm only going over home**

I want to wear that crown of glory

When I get home to that good land

Well I want to shout salvation's story

In concert with the blood-washed band

**I'm going there to see my savior**

**Oh I'm going there no more to roam**

**I'm only going over Jordan**

**I'm only going over home**

# The Weight

The Band

Key of A, 4/4 time

A            C#m            D            A  
I pulled into Nazareth, I was feelin' about half past dead  
A            C#m            D            A  
I just need some place where I can lay my head  
A            C#m            D            A  
"Hey, mister, can you tell me where a man might find a bed?"  
A            C#m            D            A  
He just grinned and shook my hand, and "No!", was all he said

**Chorus:**

|A    E    |D    |A    E    |D  
Take a load off Annie, take a load for free  
|A    E    |D    D/  
Take a load off Annie, and, and, and  
n/c                            n/c            |A A/G#| F#m E | D    D  
You put the load, put the load right on me

I picked up my bag, I went lookin' for a place to hide  
When I saw Carmen and the Devil walkin' side by side  
I said, "Hey, Carmen, come on, let's go downtown."  
She said, "I gotta go, but my friend can stick around."

**CHORUS**

Go down, Miss Moses, there's nothin' you can say  
It's just ol' Luke, and Luke's waitin' on the Judgement Day  
"Well, Luke, my friend, what about young Anna Lee?"  
He said, "Do me a favor, son, wontcha stay an' keep Anna Lee company?"

**CHORUS**

Crazy Chester followed me, and he caught me in the fog  
He said, "I will fix your rags, if you'll take Jack, my dog."  
I said, "Wait a minute, Chester, you know I'm a peaceful man."  
He said, "That's okay, boy, won't you feed him when you can."

**CHORUS w/ double harmonic tag**

Catch a Cannonball, now, to take me down the line  
My bag is sinkin' low and I do believe it's time  
To get back to Miss Annie, you know she's the only one  
Who sent me here with her regards for everyone

**CHORUS w/ double harmonic tag**

# White Freight Liner Blues

Townes Van Zandt

4/4 Time, key of C

## *Instrumental Intro*

**F** **C**  
I'm goin' out on the highway listenin' to them big trucks whine

**F** **C**  
I'm goin' out on the highway listenin' to them big trucks whine

**G** **F** **C**  
White Freightliner won't you steal away my mind

Well, New Mexico ain't bad, Lord people here they treat you fine  
Well, New Mexico ain't bad, Lord people here they treat you fine  
That old white freight liner won't ya steal away my mind

## *Instrumental*

Well it's bad news from Houston half my friends are dying  
Well it's bad news from Houston half my friends are dying  
White freight liner won't you steal away my mind

Well, Lord, I'm gonna ramble 'til I get back to where I came  
Well, Lord, I'm gonna ramble 'til I get back to where I came  
That old white freight liner's gonna haul away my brain

## *Instrumental*

I'm goin' out on the highway listenin' to them big trucks whine  
I'm goin' out on the highway listenin' to them big trucks whine  
White freight liner won't you steal away my mind  
White freight liner won't you steal away my mind

# Wild World

Yusuf Cat Stevens

4/4 time, key of C

Intro:

Am D7 G  
La-la-la-la-la-la-la-la, la, la  
C F  
La-la-la-la-la-la-la-la, la, la  
Dm E7 E7  
La-la-la-la-la-la-la-la, la, la-la, la

Am D7 G  
Now that I've lost everything to you  
C F  
You say you wanna start something new  
Dm E7  
And it's breaking my heart you're leaving  
E7  
Baby I'm griev-ing

Am D7 G  
But if you wanna leave, take good care  
C F  
Hope you have a lot of nice things to wear  
Dm | E7 G | G G  
But then a lot of nice things turn bad out there

CHORUS:

C G F (riff 1)  
Oh, baby, baby it's a wild world  
G F C (riff 2)  
It's hard to get by, just upon a smile  
C G F (riff 1)  
Oh, baby, baby it's a wild world  
G F C | Dm E7|  
I'll always remember you like a child girl

Am D7 G  
You know I've seen a lot of what the world can do  
C F  
And it's breaking my heart in two  
Dm E7  
But I never want to see you sad girl  
E7  
Don't be a bad girl

Am D7 G  
But if you want to leave, take good care  
C F  
Hope you make a lot of nice friends out there  
Dm | E7 G| G G  
But just remember there's a lot of bad and beware

CHORUS

Am D7 G  
La-la-la-la-la-la-la-la, la, la  
C F  
La-la-la-la-la-la-la-la, la, la  
Dm E7 E7  
La-la-la-la-la-la-la-la, baby I love you

Am D7 G  
But if you want to leave, take good care  
C F  
Hope you make a lot of nice friends out there  
Dm | E7 G| G G  
But just remember there's a lot of bad and beware

DOUBLE CHORUS

# Wildflowers

Tom Petty

Intro: G D A D G D A D

G D A D

You belong among the wildflowers

G D A D

You belong in a boat out at sea

G D A D

Sail away, kill off the hours

G D A D D D D D

You belong somewhere you feel free

G D A D

Run away, find you a lover

G D A A

Go away somewhere all bright and new

G D A D

I have seen no other

G D A D

Who compares with you

G D A D

You belong among the wildflowers

G D A A

You belong in a boat out at sea

G D A D

You belong with your love on your arm

G D A D D D D D

You belong somewhere you feel free

- G D A D Run away, go find a lover
- G D A D Run away, let your heart be your guide
- G D A D You deserve the deepest of cover
- G D A D You belong in that home by and by
  
- G D A D You belong among the wildflowers
- G D A A You belong somewhere close to me
- G D A D Far away from your trouble and worry
- G D A D You belong somewhere you feel free
- G D A D You belong somewhere you feel free

# Wildwood Flower

Maybelle Carter

4/4 time, key of C

          C                  C                  G7                  C  
Oh I'll twine with my mingles and waving black hair

          C          C                  G7          C  
With the roses so red and the lilies so fair

          C          C                  F          C  
And the myrtle so bright with the emerald hue

          C          C          G7                  C  
The pale and the leader and eyes look like blue

I will dance, I will sing and my laugh shall be gay  
I will charm every heart, in his crown I will sway  
I woke from my dreaming, my idol was clay  
All portions of loving had all flown away

But he taught me to love him and promised to love  
And to cherish me over all others above  
My poor heart is wondering no misery can tell  
He left with no warning, no word of farewell

Well you told me you love me and called me your flower  
That was blooming to cheer you through life's dreary hour  
I live to see him regret life's dark hour  
He's gone and neglected this pale wildwood flower

# Will the Circle Be Unbroken

*Traditional*

<b>G</b>					
Will the circle be unbroken	G	G	G	G	
<b>C</b>					
Bye and bye, Lord, bye and bye	C	C	G	G	
<b>G</b>					
There's a better home awaitin'	G	G	G	G	
<b>G</b>					
<b>G</b> <b>D</b> <b>G</b>	G	D	G	G	
In the sky, Lord, in the sky					

I was standing by my window	I	I	I	I	
On a cold and cloudy day					
When I saw that hearse come rolling	IV	IV	I	I	
For to carry my mother away	I	I	I	I	
Lord, I told that undertaker	I	V	I	I	
Undertaker, please drive slow					
For this body that you're hauling					
Lord, I hate to see her go					

I followed close behind her  
Tried to hold up and be brave  
But I could not hide my sorrow  
When they laid her in the grave

I went home, Lord, my home was lonesome  
Since my mother she was gone  
All my brothers, sisters crying  
What a home so sad and alone

# Willin'

Little Feat

4/4 time, key of G

## Intro:

G D/F# Em C  
G |C D C| G

G  
I've been warped by the rain

D/F#

Driven by the snow

Em C  
Drunk and dirty, don't you know

G |C D C| G G  
But I'm still willin'

G  
And I was out on the road

D/F#

Late at night

Em C  
Seen my pretty Alice in every headlight

G |C D C| G G  
Alice, Dallas Alice

## CHORUS:

C D  
And I been from Tucson to Tucumcari

D G  
Tehachapi to Tonopah

G 2/4G C C  
Driven every kind of rig that's ever been made

C 2/4C D  
Driven the back roads so I wouldn't get weighed

N/C C C/B Am G  
And if you give me, weed, whites and wine

D D  
And you show me a sign

G |C D C| G G  
I'll be willin' to be movin'

G  
Kicked by the wind

D/F#

Robbed by the sleet

Em C  
Had my head stoved in but I'm still on my feet

G |C D C| G G  
And I'm still willin'

G D/F#  
Smuggled some smokes and folks from Mexico

Em

Baked by the sun

C  
Every time I go to Mexico

G |C D C| G G  
And I'm still....

## CHORUS



# Wish You Were Here

*Pink Floyd*

*4/4 time, key of G*

*Instrumental Interlude:*

Em G Em G Em A Em A G G

**C** **D**  
So, so you think you can tell

**Am** **G**  
Heaven from hell blue skies from pain

**D** **C**  
Can you tell a green field from a cold steel rail

**Am** **G**  
A smile from a veil, do you think you can tell

**C** **D**  
And did they get you to trade your heroes for ghosts

**Am** **G**  
Hot ashes for trees, hot air for a cool breeze

**D** **C**  
Cold comfort for change, and did you exchange

**Am** **G**  
A walk on part in the war for a lead role in a cage

*Instrumental Interlude*

**C** **D**  
How I wish, how I wish you were here

**Am** **G**  
We're just two lost souls swimming in a fish bowl, year after year

**D** **C**  
Running over the same old ground, what have we found

**Am** **G**  
The same old fears, wish you were here

*Instrumental Interlude*

*Play each chord for two measures, rest on two pattern*

# Yellow Submarine

The Beatles

4/4 time, key of D

A D Em A  
In the town where I was born lived a man who sailed to sea

A D Em A  
And he told us of his life in the land of submarines

A D Em A  
So we sailed up to the sun till we found the sea of green

A D Em A  
And we lived beneath the waves in our yellow submarine

## CHORUS:

D A A D  
We all live in a yellow submarine, a yellow submarine, a yellow submarine

D A A D  
We all live in a yellow submarine, a yellow submarine, a yellow submarine

A D Em A And our friends are all on board many more of them live next door

A D Em A And the band begins to play

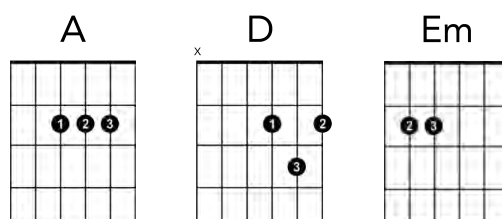
A D Em A As we live a life of ease every one of us has all we need

A D Em A Sky of blue and sea of green in our yellow submarine

## CHORUS

*When learning to sing and play:*

*Try one strum per chord (whole notes) for the verses and  
4 strums per chord (quarter notes) for the choruses*



# You Ain't Goin' Nowhere

Bob Dylan

4/4 time, key of G

G                      Am                      C                      G  
Clouds so swift the rain won't lift, gate won't close, railing's froze  
G                      Am                      C                      G  
Get your mind off wintertime, 'cause you ain't goin' nowhere

## CHORUS:

G                      Am                      C                      G  
Whoo-ee ride me high, tomorrow's the day my bride's gonna come  
G                      Am                      C                      G  
Oh-oh, are we gonna fly, down in the easy chair

G                      Am                      C                      G  
I don't care how many letters they sent, morning came and morning went  
G                      Am                      C                      G  
Pick up your money, and pack up your tent, you ain't goin' nowhere

## CHORUS

G                      Am                      C                      G  
Buy me a flute, and a gun that shoots, tailgates and substitutes  
G                      Am                      C                      G  
Strap yourself to the tree with roots, you ain't goin' nowhere

## CHORUS

G                      Am                      C                      G  
Genghis Khan, he could not keep, all his kings supplied with sleep  
G                      Am                      C                      G  
We'll climb that hill no matter how steep, when we come up to it

## CHORUS

# You Are My Sunshine

*Davis & Mitchell*

A

You are my sunshine, my only sunshine

D

A

You make me happy when skies are gray

D

A

You'll never know dear how much I love you

A

E

A

Please don't take my sunshine away

The other night dear as I lay sleeping

I dreamed I held you in my arms

When I awoke dear I was mistaken

And I hung my head and I cried

I'll always love you and make you happy

If you will only say the same

But if you leave me to love another

You'll regret it all someday

You told me once dear you really loved me

And no one else could come between

But now you've left me and love another

You have shattered all my dreams

# You've Got to Hide Your Love Away

The Beatles

Key of G — 6/8 time

G D F G C C F C

Here I stand with head in hand, turn my face to the wall

G D F G C C F C D D

If she's gone I can't go on feeling two feet small

G D F G C C F C

Everywhere people stare each and every day

G D F G C C F C D D D7 D7

I can see them laugh at me, and I hear them say

## CHORUS:

G G C C Dsus4 D D9 D

Hey, you've got to hide your love away

G G C C Dsus4 D D9 D

Hey, you've got to hide your love away

G D F G C C F C

How can I even try, I can never win

G D F G C C F C D D

Hearing them, seeing them in the state I'm in

G D F G C C F C

How could she say to me: "Love will find a way"?

G D F G C C F C D D D7 D7

Gather 'round all you clowns, let me hear you say

## CHORUS

